



December 18, 2025



The New Elementary School | Stoughton, MA

Site Plan Review



Locus Map

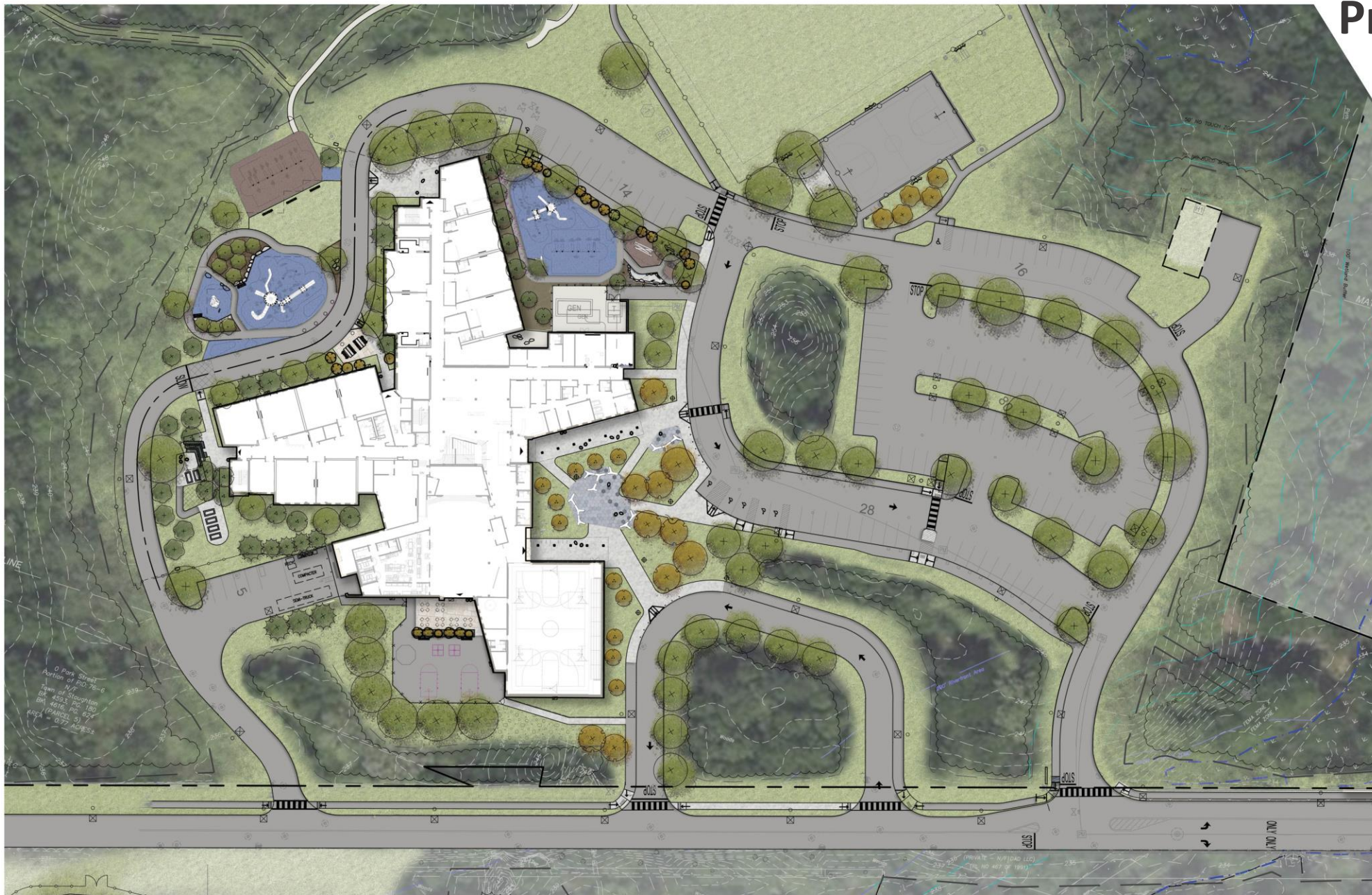


samiotes

The logo of the University of Wyoming, featuring a stylized illustration of a cowboy riding a bucking horse. The horse is depicted in a dynamic, rearing position, with its front legs tucked and its body arched. The cowboy is seated on the horse, holding a lasso aloft in his right hand. The entire logo is rendered in a monochromatic black and white style, with bold outlines and no internal shading.



Proposed Site Plan



Proposed Site Plan

















LEGEND

- WETLAND BORDER
- 30' NO DISTURB
- 50' NO BUILD
- 100' WETLAND BUFFER
- DORCHESTER BROOK
- ... 100' AND 200' RIPARIAN ZONE
- ... FEMA ZONE A

Demolition Plan

LEGEND

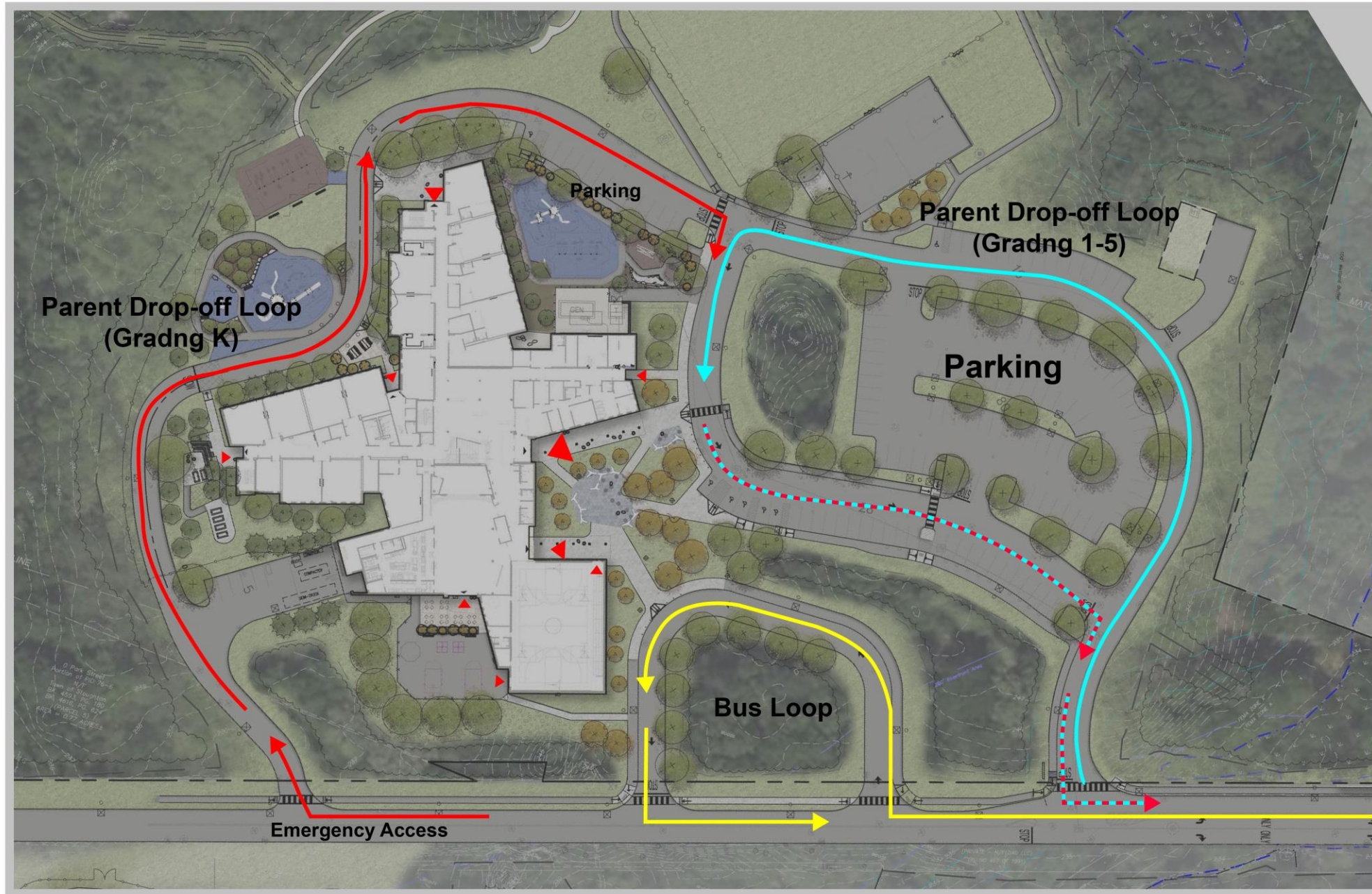
-  PROPOSED BUILDING
-  TEMPORARY SEDIMENT BASIN
-  TEMPORARY DIVERSION SWALE WITH CHECK DAM
-  FENCE REMOVAL
-  UTILITIES LINE TO BE REMOVED/ABANDONED
-  LIMIT OF WORK
-  EROSION CONTROL
-  UTILITIES STRUCTURE TO BE REMOVED
-  PROPOSED CATCHBASIN FILTER
-  BITUMINOUS CONCRETE TO BE REMOVED
-  TREE AREA TO BE CLEARED
(INCLUDING STUMPS, CLEAR/GRUB, ETC.)
-  CONSTRUCTION ENTRANCE
-  AREA WHERE STOCKPILING IS PROHIBITED
-  TREES TO REMAIN AND BE PROTECTED

Utility Plan

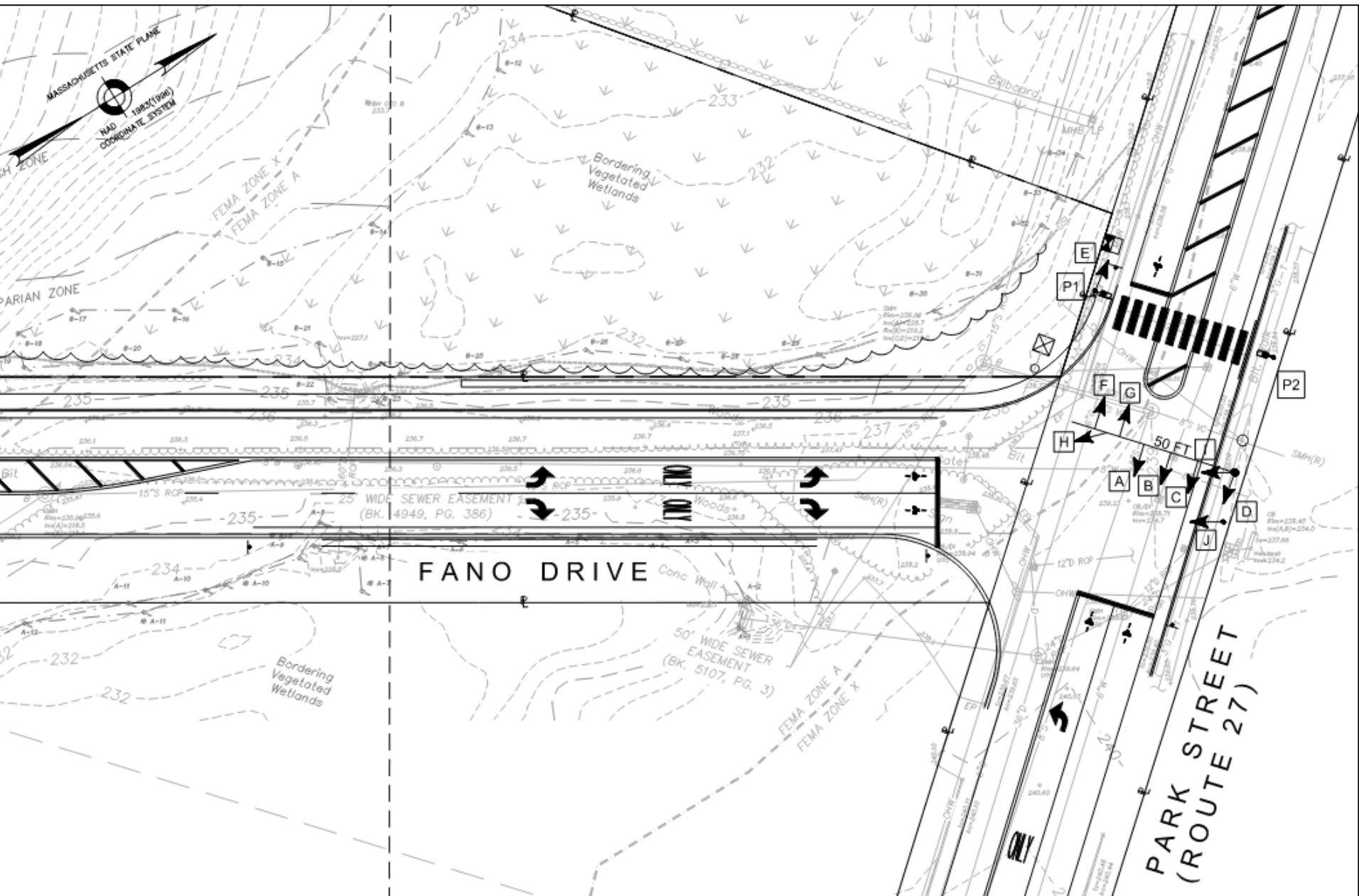
LEGEND

- PROPOSED DRAIN LINE
- PROPOSED WATER LINE
- PROPOSED ELECTRICAL
- PROPOSED SEWER
- EXISTING DRAIN LINE
- EXISTING WATER LINE
- EXISTING ELECTRICAL
- EXISTING SEWER

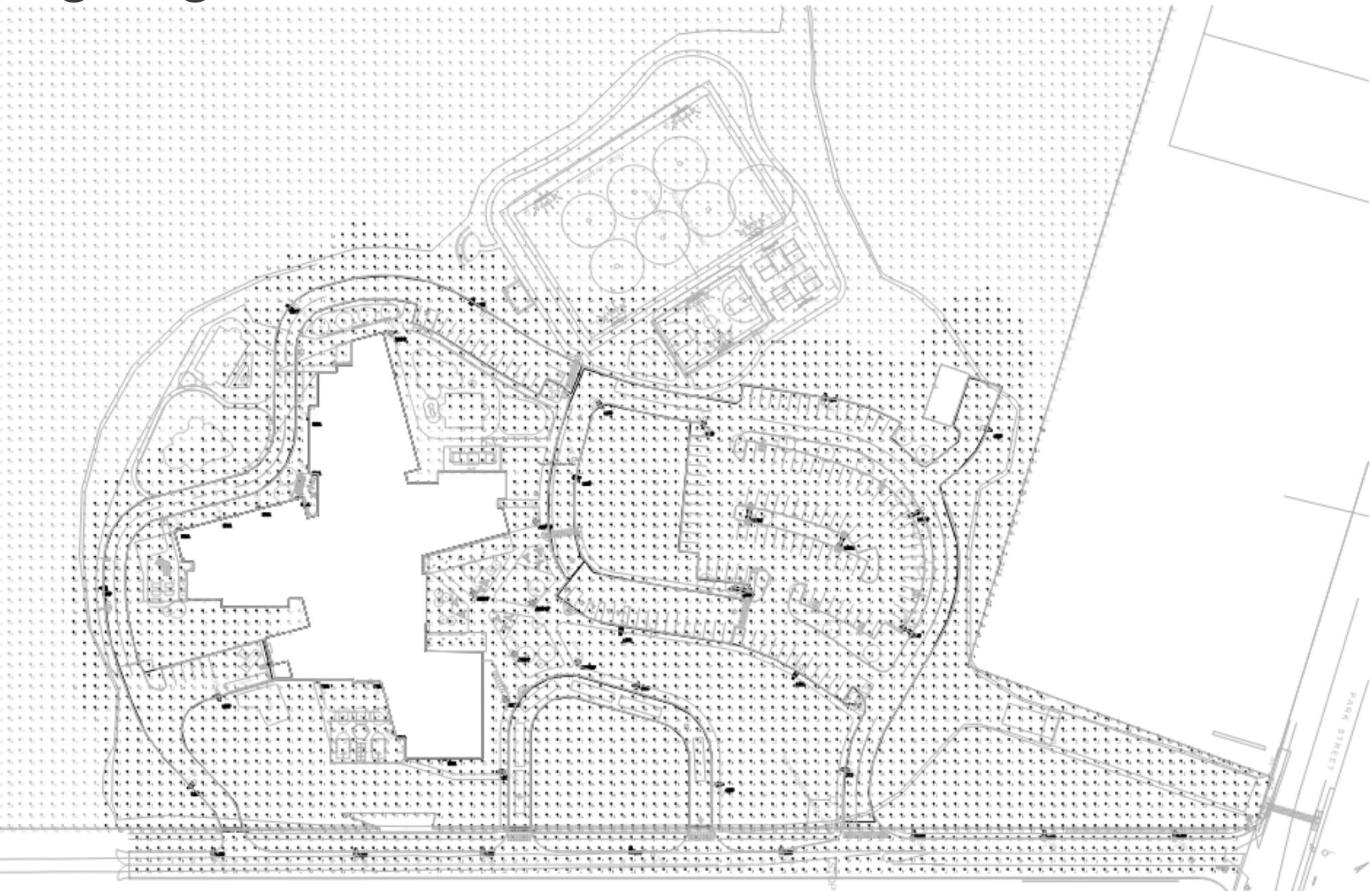
Site Circulation



Traffic Plan



Lighting and Photometrics Plan



Building Views



EXTERIOR BIRD'S EYE VIEW TOWARDS MAIN ENTRANCE



BIRD'S EYE BUILDING MASSING VIEW



5 OVERALL NORTH BUILDING ELEVATION
1/16" = 1'-0"



4 OVERALL WEST BUILDING ELEVATION
1/16" = 1'-0"



3 OVERALL SOUTH BUILDING ELEVATION
1/16" = 1'-0"



1 OVERALL EAST BUILDING ELEVATION
1/16" = 1'-0"



EXTERIOR VIEW FROM ENTRANCE DRIVE



EXTERIOR VIEW LOOKING TOWARDS KINDER PLAY



EXTERIOR MAIN ENTRANCE PLAZA

Building Materials



EXTERIOR BIRD'S EYE VIEW TOWARDS MAIN ENTRANCE



Building Elevation Views



5 OVERALL NORTH BUILDING ELEVATION
1/16" = 1'-0"



1 OVERALL EAST BUILDING ELEVATION
1/16" = 1'-0"

Building Elevation Views



4 OVERALL WEST BUILDING ELEVATION
1/16" = 1'-0"



3 OVERALL SOUTH BUILDING ELEVATION
1/16" = 1'-0"

Front Plaza



K-1 Play Area



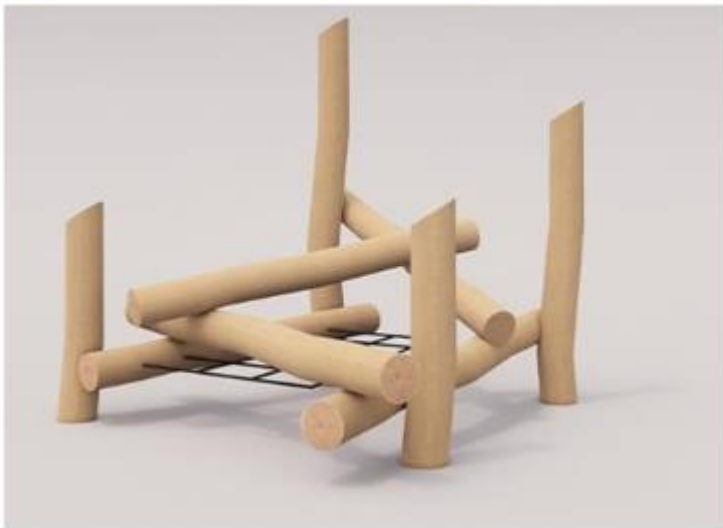
K-1 Play Area (Main Play Space – Landscape Structures)



K-1 Play Area: Nature Sensory Area



Log Jam (Balance, Climbing, Social)



Play House



Bonded Rubber Surfacing



Grades 2-5 Play Area



Outdoor Learning



Overall Landscape Plan



Storm Basin

Naturalization Tree and shrub



American Hornbeam Multi-trunk (CA3)



Black Gum (NS)



Common Witch Hazel (HI2)



Pennsylvania Sedge (CP)

Front Plaza

Tree + no-mow grass



American Hornbeam Multi-trunk (CA3)



Black Gum (NS)



Whitespire Birch(BP)



Pine Oak (QP)



Pennsylvania Sedge (CP)

Café/Ball Court Area

Tree + seed mix, shrub buffer between



American Linden (TA)



Eastern White Pine (PF)



Native Conservation Seed Mix (NE)



Sweet Peperbush (CA)

Outdoor Classroom Area

Tree + lawn



Heritage Birch (BN)



Eastern White Pine (PT)



`Autumn Brilliance` Serviceberry (AX2)



Golden Raindrops Crabapple (MS2)



Skyline Thornless
Honey Locust (GTS)



Eastern Red Cedar (JVB)

samiotes

Playground Area

Tree + mulch bed, open lawns for play, shrub for teacher's seating area



Quaking Aspen (PT)



Eastern Redbud Multi-trunk(CE)



Eastern White Pine



Yellowwood (CP3)



Heritage Birch (BN)



Oakleaf Hydrangea (HQ)



Eastern Red Cedar (JVB)

Playground Area

Tree + mulch bed, separated shrub buffer



Black Gum (NS)



Common Witch Hazel (HI2)



Oakleaf Hydrangea (HQ)



'Autumn Brilliance' Serviceberry (AX2)



Skyline Thornless
Honey Locust (GTS)



American Hornbeam Multi-trunk (CA3)

Front View of Building



Q & A