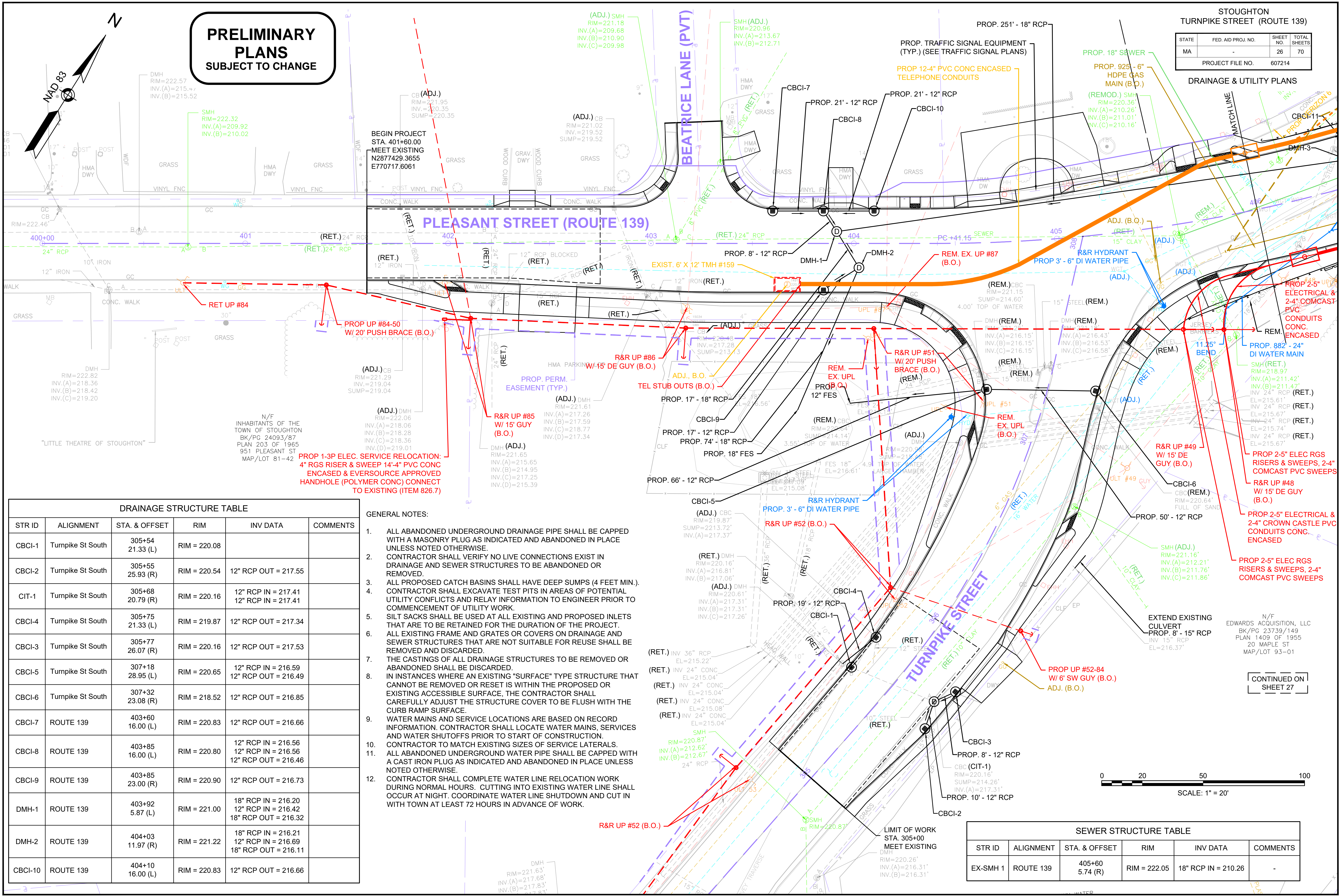


**PRELIMINARY PLANS
SUBJECT TO CHANGE**

STOUGHTON
TURNPIKE STREET (ROUTE 139)

STATE	FED. AID PROJ. NO.	SHEET NO.	TOTAL SHEETS
MA	-	26	70
PROJECT FILE NO. 607214			

DRAINAGE & UTILITY PLANS



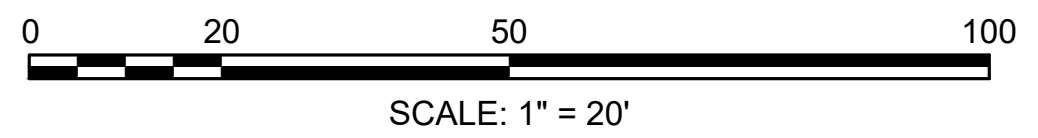
DRAINAGE STRUCTURE TABLE

STR ID	ALIGNMENT	STA. & OFFSET	RIM	INV DATA	COMMENTS
CBCI-1	Turnpike St South	305+54 21.33 (L)	RIM = 220.08		
CBCI-2	Turnpike St South	305+55 25.93 (R)	RIM = 220.54	12" RCP OUT = 217.55	
CIT-1	Turnpike St South	305+68 20.79 (R)	RIM = 220.16	12" RCP IN = 217.41 12" RCP IN = 217.41	
CBCI-4	Turnpike St South	305+75 21.33 (L)	RIM = 219.87	12" RCP OUT = 217.34	
CBCI-3	Turnpike St South	305+77 26.07 (R)	RIM = 220.16	12" RCP OUT = 217.53	
CBCI-5	Turnpike St South	307+18 28.95 (L)	RIM = 220.65	12" RCP IN = 216.59 12" RCP OUT = 216.49	
CBCI-6	Turnpike St South	307+32 23.08 (R)	RIM = 218.52	12" RCP OUT = 216.85	
CBCI-7	ROUTE 139	403+60 16.00 (L)	RIM = 220.83	12" RCP OUT = 216.66	
CBCI-8	ROUTE 139	403+85 16.00 (L)	RIM = 220.80	12" RCP IN = 216.56 12" RCP IN = 216.56 12" RCP OUT = 216.46	
CBCI-9	ROUTE 139	403+85 23.00 (R)	RIM = 220.90	12" RCP OUT = 216.73	
DMH-1	ROUTE 139	403+92 5.87 (L)	RIM = 221.00	18" RCP IN = 216.20 12" RCP IN = 216.42 18" RCP OUT = 216.32	
DMH-2	ROUTE 139	404+03 11.97 (R)	RIM = 221.22	18" RCP IN = 216.21 12" RCP IN = 216.69 18" RCP OUT = 216.11	
CBCI-10	ROUTE 139	404+10 16.00 (L)	RIM = 220.83	12" RCP OUT = 216.66	

- GENERAL NOTES:**
- ALL ABANDONED UNDERGROUND DRAINAGE PIPE SHALL BE CAPPED WITH A MASONRY PLUG AS INDICATED AND ABANDONED IN PLACE UNLESS NOTED OTHERWISE.
 - CONTRACTOR SHALL VERIFY NO LIVE CONNECTIONS EXIST IN DRAINAGE AND SEWER STRUCTURES TO BE ABANDONED OR REMOVED.
 - ALL PROPOSED CATCH BASINS SHALL HAVE DEEP SUMPS (4 FEET MIN.).
 - CONTRACTOR SHALL EXCAVATE TEST PITS IN AREAS OF POTENTIAL UTILITY CONFLICTS AND RELAY INFORMATION TO ENGINEER PRIOR TO COMMENCEMENT OF UTILITY WORK.
 - SILT SACKS SHALL BE USED AT ALL EXISTING AND PROPOSED INLETS THAT ARE TO BE RETAINED FOR THE DURATION OF THE PROJECT.
 - ALL EXISTING FRAME AND GRATES OR COVERS ON DRAINAGE AND SEWER STRUCTURES THAT ARE NOT SUITABLE FOR REUSE SHALL BE REMOVED AND DISCARDED.
 - THE CASTINGS OF ALL DRAINAGE STRUCTURES TO BE REMOVED OR ABANDONED SHALL BE DISCARDED.
 - IN INSTANCES WHERE AN EXISTING "SURFACE" TYPE STRUCTURE THAT CANNOT BE REMOVED OR RESET IS WITHIN THE PROPOSED OR EXISTING ACCESSIBLE SURFACE, THE CONTRACTOR SHALL CAREFULLY ADJUST THE STRUCTURE COVER TO BE FLUSH WITH THE CURB RAMP SURFACE.
 - WATER MAINS AND SERVICE LOCATIONS ARE BASED ON RECORD INFORMATION. CONTRACTOR SHALL LOCATE WATER MAINS, SERVICES AND WATER SHUTOFFS PRIOR TO START OF CONSTRUCTION.
 - CONTRACTOR TO MATCH EXISTING SIZES OF SERVICE LATERALS.
 - ALL ABANDONED UNDERGROUND WATER PIPE SHALL BE CAPPED WITH A CAST IRON PLUG AS INDICATED AND ABANDONED IN PLACE UNLESS NOTED OTHERWISE.
 - CONTRACTOR SHALL COMPLETE WATER LINE RELOCATION WORK DURING NORMAL HOURS. CUTTING INTO EXISTING WATER LINE SHALL OCCUR AT NIGHT. COORDINATE WATER LINE SHUTDOWN AND CUT IN WITH TOWN AT LEAST 72 HOURS IN ADVANCE OF WORK.

SEWER STRUCTURE TABLE

STR ID	ALIGNMENT	STA. & OFFSET	RIM	INV DATA	COMMENTS
EX-SMH 1	ROUTE 139	405+60 5.74 (R)	RIM = 222.05	18" RCP IN = 210.26	



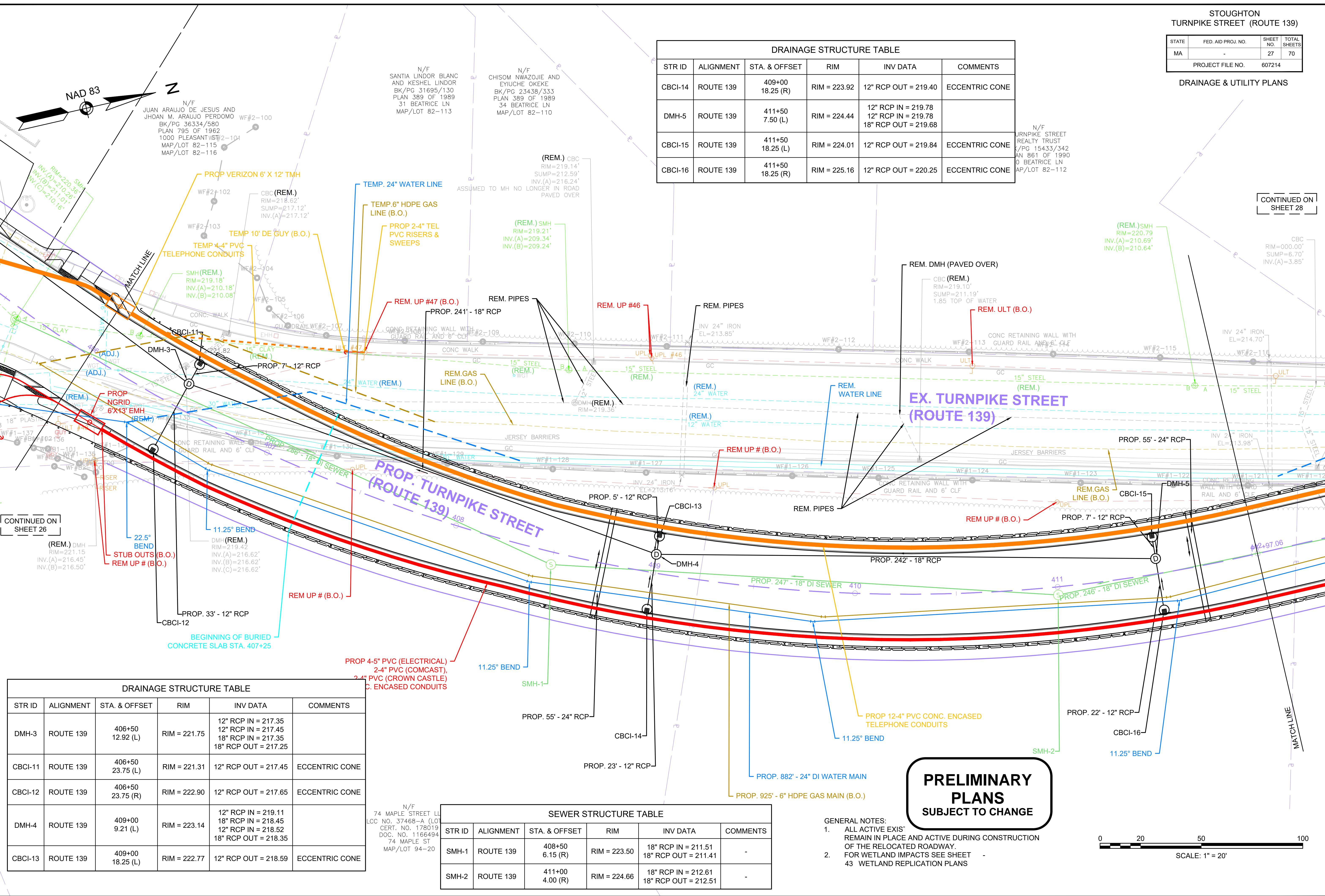
CONTINUED ON
SHEET 27

STATE	FED. AID PROJ. NO.	SHEET NO.	TOTAL SHEETS
MA	-	27	70
PROJECT FILE NO.		607214	

DRAINAGE & UTILITY PLANS

DRAINAGE STRUCTURE TABLE					
STR ID	ALIGNMENT	STA. & OFFSET	RIM	INV DATA	COMMENTS
CBCI-14	ROUTE 139	409+00 18.25 (R)	RIM = 223.92	12" RCP OUT = 219.40	ECCENTRIC CONE
DMH-5	ROUTE 139	411+50 7.50 (L)	RIM = 224.44	12" RCP IN = 219.78 12" RCP IN = 219.78 18" RCP OUT = 219.68	
CBCI-15	ROUTE 139	411+50 18.25 (L)	RIM = 224.01	12" RCP OUT = 219.84	ECCENTRIC CONE
CBCI-16	ROUTE 139	411+50 18.25 (R)	RIM = 225.16	12" RCP OUT = 220.25	ECCENTRIC CONE

SEWER STRUCTURE TABLE					
STR ID	ALIGNMENT	STA. & OFFSET	RIM	INV DATA	COMMENTS
SMH-1	ROUTE 139	408+50 6.15 (R)	RIM = 223.50	18" RCP IN = 211.51 18" RCP OUT = 211.41	-
SMH-2	ROUTE 139	411+00 4.00 (R)	RIM = 224.66	18" RCP IN = 212.61 18" RCP OUT = 212.51	-



CONTINUED ON SHEET 26

CONTINUED ON SHEET 28

DRAINAGE STRUCTURE TABLE					
STR ID	ALIGNMENT	STA. & OFFSET	RIM	INV DATA	COMMENTS
DMH-3	ROUTE 139	406+50 12.92 (L)	RIM = 221.75	12" RCP IN = 217.35 12" RCP IN = 217.45 18" RCP IN = 217.35 18" RCP OUT = 217.25	
CBCI-11	ROUTE 139	406+50 23.75 (L)	RIM = 221.31	12" RCP OUT = 217.45	ECCENTRIC CONE
CBCI-12	ROUTE 139	406+50 23.75 (R)	RIM = 222.90	12" RCP OUT = 217.65	ECCENTRIC CONE
DMH-4	ROUTE 139	409+00 9.21 (L)	RIM = 223.14	12" RCP IN = 219.11 18" RCP IN = 218.45 12" RCP IN = 218.52 18" RCP OUT = 218.35	
CBCI-13	ROUTE 139	409+00 18.25 (L)	RIM = 222.77	12" RCP OUT = 218.59	ECCENTRIC CONE

**PRELIMINARY PLANS
SUBJECT TO CHANGE**

- GENERAL NOTES:
- ALL ACTIVE EXIS' REMAIN IN PLACE AND ACTIVE DURING CONSTRUCTION OF THE RELOCATED ROADWAY.
 - FOR WETLAND IMPACTS SEE SHEET 43 WETLAND REPLICATION PLANS

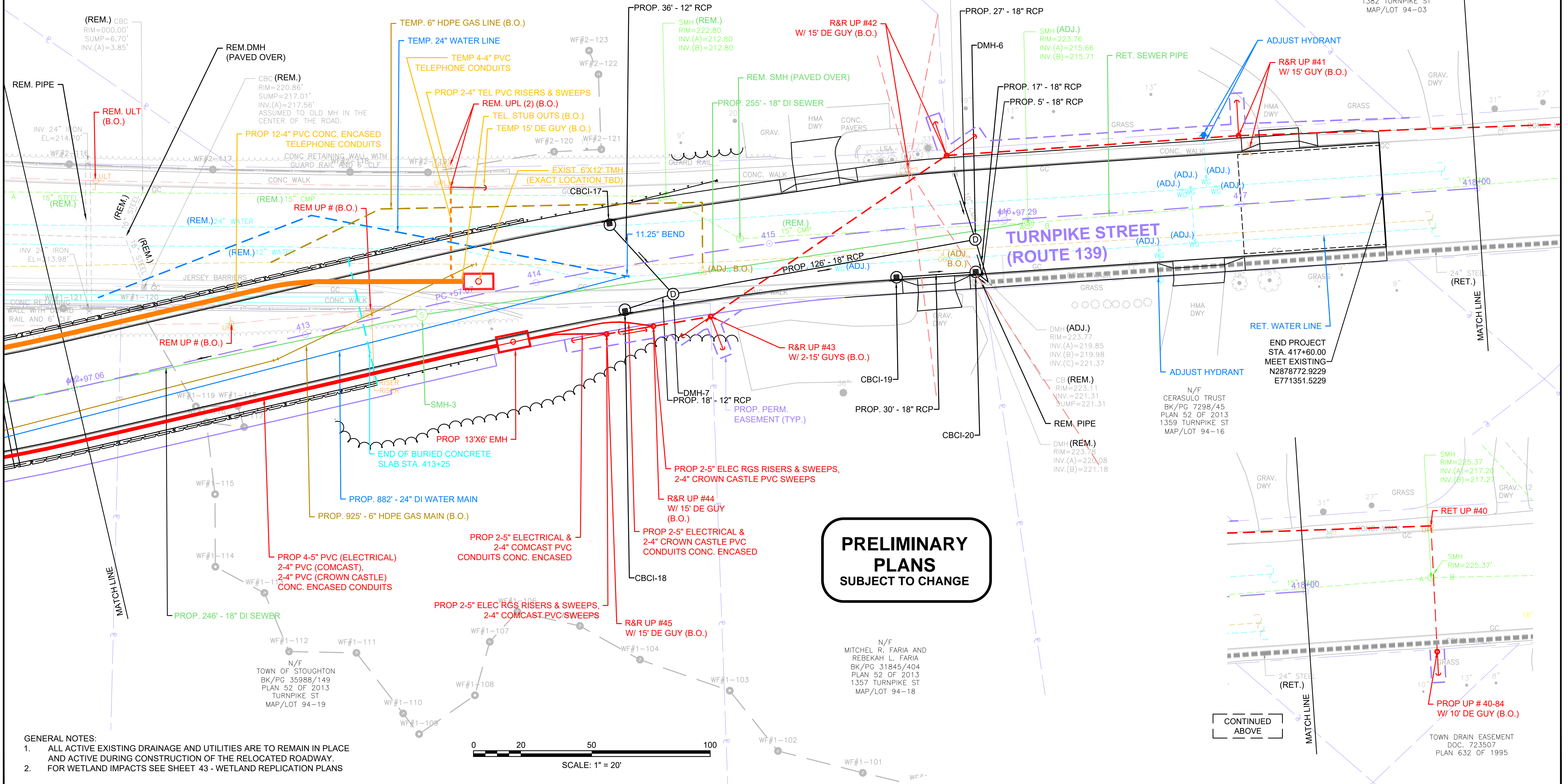


DRAINAGE STRUCTURE TABLE					
STR ID	ALIGNMENT	STA. & OFFSET	RIM	INV DATA	COMMENTS
CBCI-17	ROUTE 139	414+35 18.25 (L)	RIM = 225.02	12" RCP OUT = 221.50	ECCENTRIC CONE
CBCI-18	ROUTE 139	414+35 18.25 (R)	RIM = 224.13	12" RCP IN = 221.30	ECCENTRIC CONE
DMH-7	ROUTE 139	414+56 15.13 (R)	RIM = 224.12	12" RCP IN = 221.30 12" RCP OUT = 221.41 18" RCP OUT = 221.20	
CBCI-19	ROUTE 139	415+52 20.32 (R)	RIM = 223.53	18" RCP OUT = 220.26	
CBCI-20	ROUTE 139	415+86 20.97 (R)	RIM = 223.61	18" RCP IN = 220.09 18" RCP OUT = 219.99	
DMH-6	ROUTE 139	415+87 7.30 (R)	RIM = 223.97	18" RCP IN = 220.14 18" RCP OUT = 220.04	

SEWER STRUCTURE TABLE					
STR ID	ALIGNMENT	STA. & OFFSET	RIM	INV DATA	COMMENTS
SMH-3	ROUTE 139	413+50 3.00 (R)	RIM = 225.07	18" RCP IN = 213.90 18" RCP OUT = 213.80	-
EX-SMH 2	ROUTE 139	416+10 1.77 (R)	RIM = 224.13	18" RCP OUT = 215.56	-

CONTINUED ON
SHEET 27

CONTINUED
BELOW



**PRELIMINARY
PLANS
SUBJECT TO CHANGE**

- GENERAL NOTES:
- ALL ACTIVE EXISTING DRAINAGE AND UTILITIES ARE TO REMAIN IN PLACE AND ACTIVE DURING CONSTRUCTION OF THE RELOCATED ROADWAY.
 - FOR WETLAND IMPACTS SEE SHEET 43 - WETLAND REPLICATION PLANS

